

ANNUAL REPORT

2023



 (042) 293-1511  Jeffreys Bay, South Africa

TABLE OF CONTENTS

Page

1	A WORD FROM LEADERSHIP
2	GLOBAL CHALLENGE BOARD TRUSTEES MANAGEMENT TEAM
4	THE FLYWHEEL VISION AND VALUES
6	IMPACT SURVEY
8	COMMUNITY
9	Global Community
10	Global Community Church
13	Hosting Events
14	EDUCATION
15	Global Leadership Academy
20	Oakridge Academy
23	Tree Tops
24	A Call To Teach
25	ABC Get Degree
26	MISSIONS
27	Global Challenge Missions One Year Expedition
28	Short Term Expeditions
29	Travel Varsity Way To The Nations
30	Missions Camps Long Term Field Workers
32	OPERATIONS
33	Global Challenge Operations
35	Global Challenge Campus
37	Global Village
38	His Table
41	PARTNERS
42	Business and Marketplace



GLOBAL CHALLENGE

ANNUAL REPORT 2023

A WORD FROM LEADERSHIP



"When it is beyond your ability to contain or control, it will give way to awe, because that is your ultimate calling."

I named twenty-twenty-three the year of the tree! Not only because 400 trees were planted but also as a symbol of resilience, purpose and growth.

Resilience

2023 marked incredible sadness when two girls at GLA committed suicide 3 months apart. I thought we had bounced back well through and after COVID. The grace of the Lord was evident. Handling this shock was very, very hard. Nevertheless, I saw the leadership team of the school come through this with enormous growth in depth and resilience.

I also take my hat off to the broader leadership team of Global Challenge. How they all keep going despite tremendous challenges at times, is so encouraging.

As trees can withstand times of drought, may we also be a people marked by resilience.

Purpose

Making disciples and shaping leaders who imitate Christ remains our focus. This is even clearer than before. It's beautiful to see people who grew up through our programmes and are part of this community steadily taking up places of contribution and influence in town. A special word of recognition to Hattingh Bornman who became Mayor of our town. Hattingh was one of the first leaders of a Global team, a teacher at GLA and then got called into politics. We have spent a lot of time developing and gathering ministry impact data. This will help us to celebrate, evaluate, and adjust to the purposes of our vision, mission and values. The variety of trees in nature is amazing. So are the different people the Lord is adding to us, each with unique gifts and purpose.

Growth

What a wonderful privilege to be part of a work of the Lord that is still growing.

Growth is evident in...

... numbers at schools

... increase of numbers in Missions

... 2023 brought more people that moved to Jeffreys Bay.

... clarity of vision, mission and values

...of God-stories to be told

This year, I've named "2024, there is more"! May resilience, purpose and growth be like a tree to provide shade for the more there is to come!

Unto Him be all the thanks, power and glory. Everything is from Him and to Him.



GLOBAL CHALLENGE BOARD

A few changes in the leadership management structures were made in 2021. The Advisory Board has been replaced by a Global Challenge Board. The board will serve to be our independent eyes and ears to ensure the sound governance of Global Challenge. The Board will officially kick off in 2022 and meet 3 times a year.

GLOBAL CHALLENGE BOARD MEMBERS



- **Neil Hart** is the executive head of the Mergon Foundation. He is the founder of Boomtown Strategic Branding in Port Elizabeth. Before going to Mergon he took over from Floyd McClung and led the All Nations hub in Cape Town.



- **Dr Eben Nel** is a fiduciary partner with PSG in Port Elizabeth. He chairs the fiduciary institute of South Africa. Eben is a research associate at the NMMU and examiner at UFS. He officially represents Global Challenge on all legal matters.

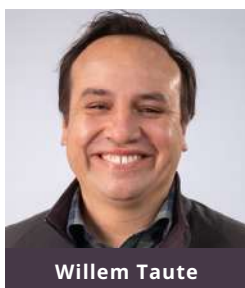


- **Edwin Fillies** is part of the International Leadership of YWAM and head of the YWAM base in Muizenberg, South Africa.



- **Dawid van Aswegen** is an industrial engineer and works for Schnellecke in Uitenhage. He leads our Global Community Church and is an integral part of the foundation of Global Challenge.

GLOBAL CHALLENGE TRUSTEES



MANAGEMENT TEAM

A management team was formed with a leadership representative from each of the different 'eco-systems' of Community, Education and Missions. In October 2021 the management team went away for a weekend and started with Praxis, a course that was initiated and sponsored by Mergon. Anna-Marie Franken and Danie Louw attended it previously and introduced it to the rest of the team. It helped the team to focus and align the values and ways of operation. The Management team meets weekly.

EDUCATION



Stefan Kleyn



Johan Oosthuizen



Lynette Schulz



Estee Kleyn



Janine Taute

MISSIONS



Willem Taute



Simon Dilger

COMMUNITY



Dawid van Aswegen



Clara du Plessis



Anita Labuschagne



Francois Labuschagne



Cornelius Ngosa



Dunette van Aswegen



Fred Euvrard



Yolanda Jordan



VISION & VALUES

PROPHETIC WORD: THE FLYWHEEL

I see in my spirit a flywheel, these are large wheels. What they do is they turn very slowly at first, but once there is an initial effort to turn them, the very weight of the wheel itself, the very momentum of the wheel itself, keeps it going and increasing.

There is built within this flywheel a grace to roll, to move to empower, to release and distribute that power, that momentum. And what I see is that kind of momentum coming upon you.

Your responsiveness is that simple nudge of the flywheel, but the power itself is the power of God. Like the wheels within wheels that Ezekiel saw, they moved on their own - you will be pulled into the momentum of the Lord moving forward and it will be beyond your natural speed and your natural strength. In the same way, as a flywheel makes no noise, it just rolls with the momentum built into it.

Even when things are put into motion and accelerated in ways beyond your ability to count, contain or control, it will give way to awe because that is your ultimate calling. When the momentum takes over and it is beyond your ability to count or control, you can experience awe and wonder that is deeper, higher and wider, because you know the flywheel of God is God Himself moving through your longings, your sighings. As it is written, "all of my sighings are known to you, my days are written in your book, my tears were kept in a bottle." All that built momenta for the day that the Lord says: "Now is the time. Now I will be exalted. Now My name will be lifted up. Now men and women will behold Jesus as Holy Lord and set Him apart in their hearts as King."

And this momentum will release worship in you, a wonder in you and worship and wonder in those that it accelerates through. The reward is just like the reward of the servants of the first miracle John recorded. It wasn't any of the high profile characters that knew the miracle or the banquet host or the bride or the groom, it was the servants who were doing their work off-camera, backstage, behind the scenes, in the place of no profile, they were the ones privileged to really see that there was no natural explanation for water gaining enough momentum to change its molecular structure into joy. You are reserved for that insider knowledge, that intimate moment when you can look at the One across the crowd and He will give you a knowing look 'We did this together. All this momentum came from being together.'

Joe Ewen invited Anna-Marie to a conference in Hungary, in October 2018. This prophetic word was given by someone she met there and in July 2020 Anna-Marie shared it with the Global Community.

Everybody had a sense that this was indeed a word from the Lord. For the next phase, we reflected on the prophetic word, and the Flywheel Model for Global Challenge was formed. This brought deeper clarity, alignment and direction into the work of Global Challenge. In 2021 many occasions were created for sharing the flywheel, together with our values, mission and vision.

We communicated this on a variety of platforms and in different creative ways.



...VISION & VALUES

VISION

JESUS

MISSION

**MAKING DISCIPLES
SHAPING LEADERS**

VALUES



GOD SEEKERS



LIVE TO LOVE



CREATIVE VENTURES



TRAVEL THE NATIONS



SERVANT LEADERSHIP

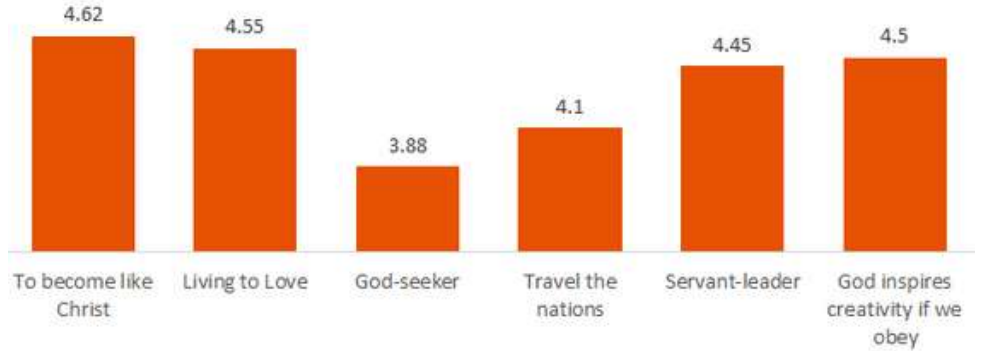


IMPACT SURVEY

In 2022 we had our first go at collecting data of the impact we have in the different areas. We did a survey of staff and community members and from the 80 responses here are some highlights below.

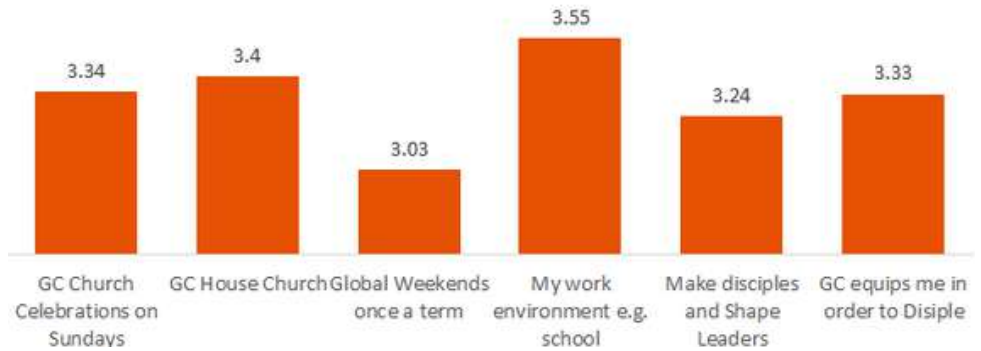
The culture of Global Challenge is described in its vision, mission and core values. How do you rate yourself in terms of the following:

- 1 - Not at all
- 3 - Sort of
- 5 - YES!



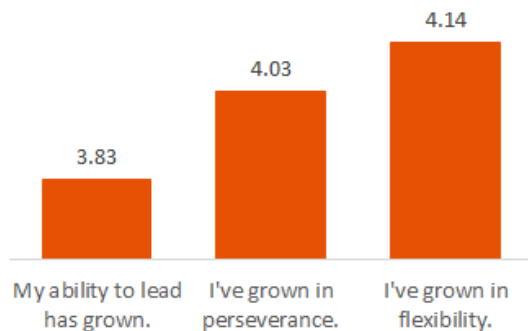
How did your engagement with the following programmes of Global Challenge shape your relationship with God this year?

- 1 - not at all
- 3 - helpful
- 5 - life-changing

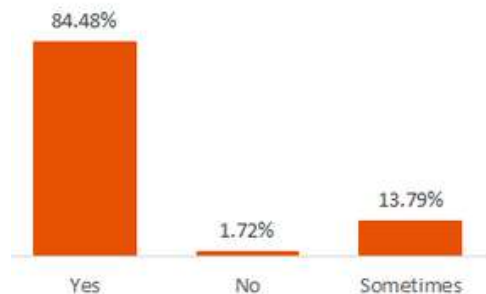


Since joining GC, How true are the following statements?

- 1 - not at all
- 3 - average growth
- 5 - exponential growth



Do you see leaders in Global Challenge in your sphere of connection who live out the core values?



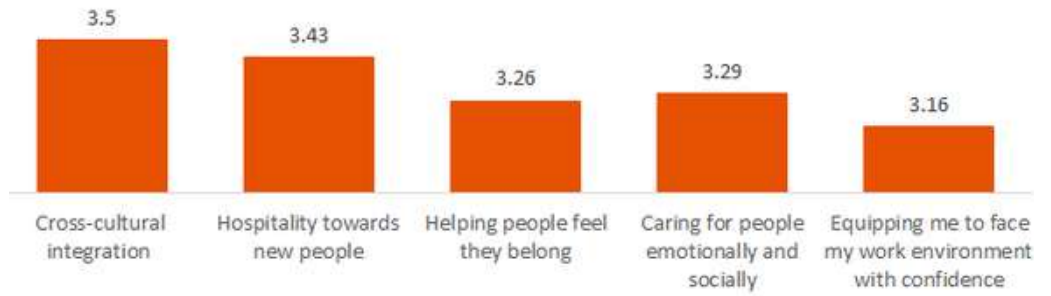
IMPACT SURVEY

How well do you think Global Challenge is doing in the following areas?

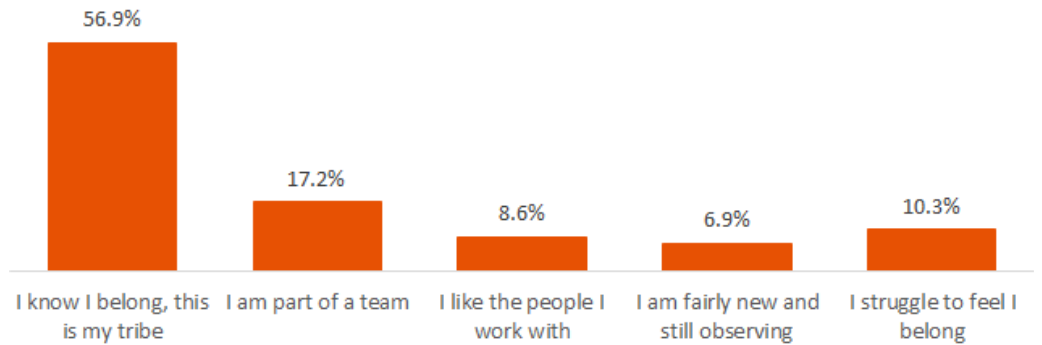
1 - not at all well

3 - reasonably well

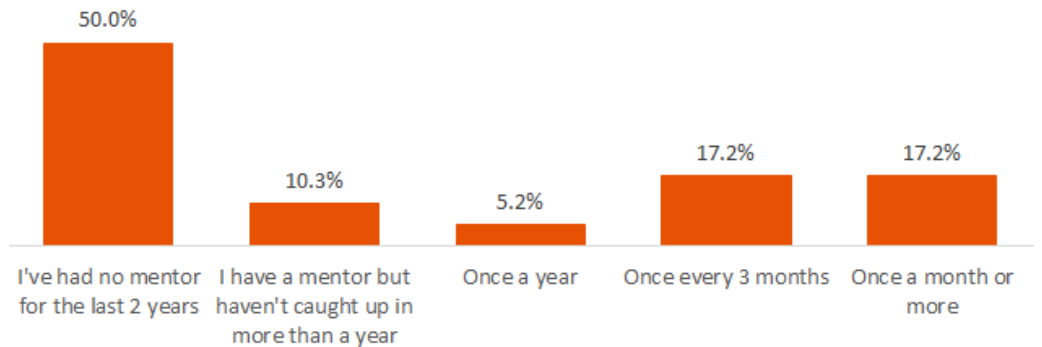
5 - exceptionally well



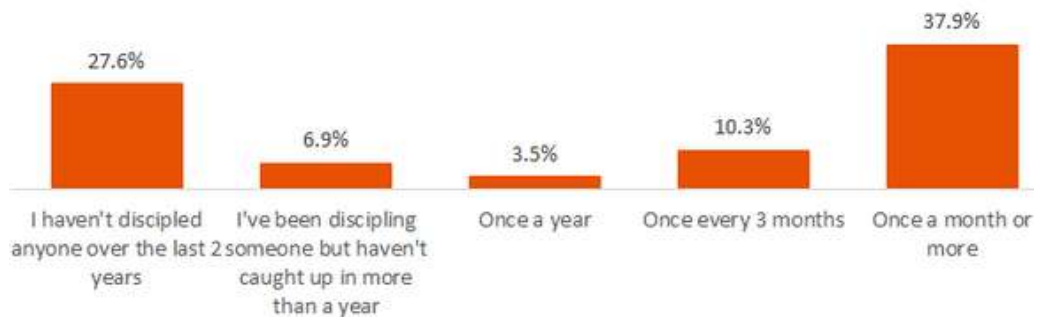
In the Global Challenge Community, how would you describe your belonging?



Do you have a mentor or someone that discipless you and how often do you meet/connect?



How often do you connect with people you disciple?





Global Community
Global Community Church
Global Hosting & Events



GLOBAL COMMUNITY



Some are teachers and missionaries. Others are corporates, business owners, and students. Together we are the *Global Community*.

We are a group of people who believe in the Biblical mandate to gather together as believers and worship Jesus. We believe that to love and disciple each other is a foremost priority, wherever each person is in their journey, non-believers and dedicated Jesus-followers alike.

We believe that it's less about attending a church and more about being the church. Together, by living out our Christian mandate throughout the week, we become church.

We believe in building the kingdom by seeing people as agents for change. The Bible aptly likens our influence to that of yeast in a batch of dough, a light that can't be hidden on a lampstand or a city on a hill. Whether it's through business, non-profits or schools, we aim to serve the Kingdom with these initiatives. These all form a powerful network of connections known as the Global Community.

Being intentional about gathering for worship and loving others, we've created a unique structure:

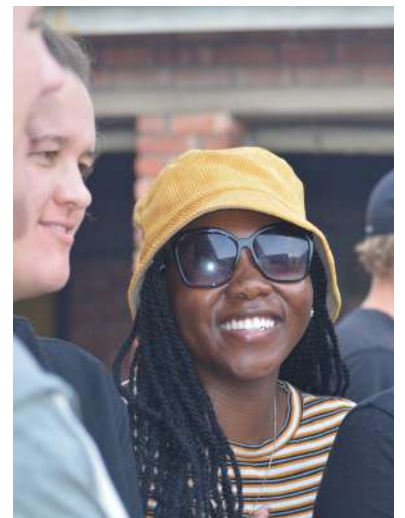
1. We meet weekly on Sunday mornings on the GLA Campus.
2. During the week we have various house churches, each with a unique flavour, that meet in homes across different parts of town.
3. Once a term we host a Global Weekend where we all have opportunity to spend a weekend away together.
4. Once a term everyone (staff, volunteers and members) are invited to attend a BIG gathering.

Our highest calling, in the end, is to worship Jesus. The one who created everything.

Flywheel Week

The beginning of the year is always a time buzzing with excitement at Global Challenge. New students arrive, new families and individuals are added to the Global Community and new staff members are integrated into our schools, Global Challenge office and other workplaces in Jeffreys Bay.

At the beginning of 2023, we hosted a "Flywheel" week of induction where we orientated new members with regards to our vision, values and different spheres of operation as an organisation. This was attended by over 50 new missions students, teachers and church members. In true Global fashion, we ended the week with a challenge flowing into our first annual Global Weekend at Eersterivier.



GLOBAL COMMUNITY CHURCH



DIRECTING TEAM



Dawid van Aswegen



Francois Labuschagne



Cornelius Ngosa

2023 started with many new couples, families and individuals joining our Global community.

We met with the **house church** leaders at the start of the year and set our focus on making sure every church member and attendant we're aware of is listed, together with their contact details, children's names, birthdays etc. We also listed all the existing house churches, the new ones that were started and focused on encouraging existing and new members/attendants to join a house church.



This helped us ensure that all **new members** are embraced and welcomed, and to help them get integrated in the Global Community. Global Challenge's ops team migrated our existing WhatsApp groups to WhatsApp Communities, which helped to have a more structured network of groups that new members can join based on their own selections and interests.

We designed and printed a **church flyer** for new and existing members with basic information on the church, including house churches, contact details, and more.

Children's church went through a season of exponential growth as new families and many children were added to our community. Luzaan Scott, together with her husband, Jacobus have raised up a dedicated and enthusiastic team of children's church facilitators. We are very grateful for all the parents and volunteers who help teach and assist with lessons.

The team has identified an excellent curriculum which they've started following and much has been sowed into children's church in terms of time, passion and resources.



GLOBAL COMMUNITY CHURCH

Jan O'Connor started a very popular **pre-teen youth group** in the Upper Room at GLA on Friday evenings. This had to be placed on hold in the second half of the year when she needed to return to the States for visa requirements.

Following the devastating news of a second suicide in GLA, Nyasa Groenewald and Nickie van den Bergh started a **youth church meeting for teens** on Sunday mornings with the help of **Barend Groenewald**.



Towards the end of the year, there was a need to reinvent youth church while the previous volunteers were led to move on in pursuit of their respective callings. The Boshoff, Handley and Isaacson families who are central in the Global community started a house church for their teens which has been very well received in fulfilling the existing needs of their children.

The 2023 One Year team returned from their global journey bringing a renewed momentum and passion to ignite a vigorous new movement amongst the youth of the Global community. This has been spearheaded by Henco Bekker and Cayla Rossouw and overseen by the church leadership.

The Veritas Bible course has seen some exciting growth as many new and existing members were trained. There was also a focus on training and empowering new facilitators due to increasing interest in the course.

One of the initiatives was the addition of **Veritas house church groups** that meet on a week evening to enable them to benefit from doing the course at a slower pace and in a more integrated way, doubling up as a house church.



GLOBAL COMMUNITY CHURCH



The way we run **media** has been reinvented to ensure the smooth handling of systems involved on Sunday mornings. We have put a team of around eight volunteers in place who work according to a schedule.

We have switched to using new software specifically designed for worship lyrics and have trained all team members in processes to follow for the seamless running of the systems involved. This includes audio recordings of the sermons made available in downloadable format online each week.

Our **church planning team** has continued meeting weekly and has met one Saturday at the end of the year to brainstorm and pray about the year ahead and spend time fellowshiping and ministering to each other.

A **church prayer meeting** was initiated by some members of the team on Sunday mornings before the service.

Our Sunday services continue to run weekly offering a space for corporate worship, teaching by a variety of in-house and visiting speakers, and the opportunity to build into each other's lives through fellowship.



GLOBAL HOSTING & EVENTS



DIRECTING TEAM



Anna-Marie Franken



Anita Labuschagne

During 2023 we hosted several World Race teams totalling 140 students. These teams worked on various building projects on the GLA Campus and also served at our ministry partners, Beats and Books, Timion and LXP.

Our number of ministry partners has grown this year and we are excited to add Pellsrus Primary School and Jeffreys Bay Comprehensive High School to the ministries where future teams will be able to serve.

In April-May we hosted a team from a school in Germany who visited our schools and also served with some of our ministry partners. We are excited about hosting more teams from Europe in the future.

It is always a blessing when hosting the teams to see how these young people grow in their relationship with the Lord while serving in our community.

We are very grateful for our staff who worked endlessly hard and gave a lot of their time to host these teams throughout the year.



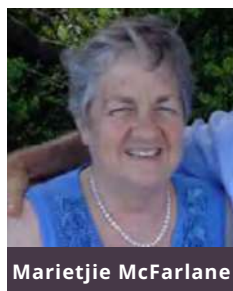
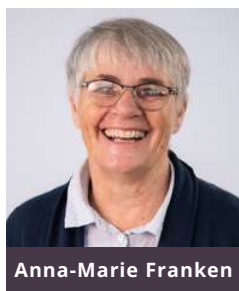


GLOBAL CHALLENGE **EDUCATION**

Global Leadership Academy
Oakridge Academy
Tree Tops
ACTT
ABC
GET Degree



DIRECTING TEAM



Global Leadership Academy is a Non Profit Based High School situated in Jeffreys Bay, South Africa. Our vision and mission draws strongly from the mandate given to us by Global Challenge and we unashamedly live and share the hope that there is through the gospel of Jesus Christ. With an educational focus we pursue with intent the mandate to Make Disciples and Shape Leaders by applying creativity and fun in most of our educational programs and offerings.

Since our establishment in 2010 we have further been on a mission to unlock the potential of African leaders through quality education that is affordable and accessible to learners from all backgrounds. We have time and time again witnessed how families are set free from a generational cycle of poverty through just one family member successfully completing their high school and tertiary education.

In essence, we provide quality education that inspires future leaders to positively impact society.

2023 HIGHLIGHTS

Best Performing Independent School in the Eastern Cape!

At GLA, our learners consistently excel academically, reflecting our commitment to Making Disciples and Shaping Leaders, preparing them for impactful futures through dedication and resilience.

This year, on top of achieving a 100% matric pass rate by the class of 2023, we were also recognised as the Best Performing Independent school in the Eastern Cape at the Provincial Awards. With a remarkable 94% Bachelor pass rate, our learners surpass even the top government schools by nearly 10%.

We attribute these successes to the combined efforts of parents, the SGB, diligent learners, dedicated staff, and our effective schooling system, acknowledging them as blessings that drive our unwavering commitment to realising each learner's God-given potential.

As we continue our journey of Making Disciples and Shaping Leaders, we remain confident that, through collective effort, GLA students will uphold our tradition of academic excellence.

Your ongoing support is invaluable to us.



...GLOBAL LEADERSHIP ACADEMY

Top-Academic Achiever in the Province

In celebrating the 2023 Matric Results, we proudly recognize Louw-Rean Fourie's outstanding accomplishments. Not only did he secure the Top-Achiever title at GLA, but he also earned the prestigious distinction of being named the Top Academic Achiever among Independent Schools in the Eastern Cape Province!

During the Eastern Cape Provincial Awards, Louw-Rean's achievements were further celebrated as he received a Laptop, Tablet, and a Bursary, propelling him towards his dream of becoming an Electrical Engineer. We share in his pride and extend heartfelt gratitude to his parents and teachers for their unwavering support throughout his academic journey.



German Partnership Program

Continuing our enduring partnership with Ilsfeld Gymnasium in Germany, a delegation of two educators and four enthusiastic students embarked on a journey to Germany from 3-11 October 2023.

This program aims to cultivate global awareness and foster collaboration among young learners. For GLA students, it provided a valuable opportunity to interact with their German counterparts, exchange knowledge and experiences, and gain a broader perspective on diverse cultures.

We express deep appreciation for the local contributions from Kouga Municipality, Pure Design Architects, and FNB Jeffreys Bay Volunteers, which supplemented the German government's funding for the visit.

The core objective of this exchange was to empower GLA students to explore global issues, particularly focusing on topics related to water scarcity and awareness. A highlight of the itinerary was the co-hosting of the inaugural Ilsfeld - Great Trolley Race, aimed at raising public awareness and garnering support for our joint water-awareness campaign.

This educational exchange also provided an opportunity for spiritual growth, resulting in two students being baptized while in Germany.



...GLOBAL LEADERSHIP ACADEMY

Creative Programs at GLA

Above and beyond the traditional extra-curricular programs offered at many South African Schools, Global Leadership Academy prides itself in creating unique opportunities for learner involvement and growth. These unique programs are:

- **Retail ROI Video Calls:** An opportunity for our learners to engage with renowned CEOs and business leaders from America, enriching their understanding of the corporate world.
- **Mighty Men Hike:** A breath-taking coastal expedition to Jeffreys Bay that instils a sense of adventure and camaraderie amongst boys.
- **Youth Fellowship:** A weekly worship and discipleship opportunity for learners to fellowship with other believers and grow in their relationship with Jesus.
- **Colour Camps:** These highly anticipated school camps involve nearly the entire school community, fostering connections and creating lasting memories.
- **Discovery Groups:** These weekly connect groups have played a pivotal role in nurturing spiritual growth and discipleship among our students.
- **Grade 11 Leadership Program:** A purposeful initiative designed to mentor and shape leadership abilities among our learners, preparing them to serve and lead with confidence.



- **Night School:** A once a year event that for some is the only reason they attend GLA...
- **Survivor Tribal Wars:** Abandoning a group of Grade 11 learners and then letting them fight for their survival in a "Survivor TV-Series" like game has only one result: Adventure!
- **Wizz Wizz Bible Quiz:** A fiercely competitive school wide event that encourages spending time in the Word of God and memorising Scripture.
- **SHFT Content Creation:** Where our students have not only excelled but even surpassed their teachers, achieving recognition and fame in the realm of YouTube as online tutors.
- **The GLA Trolley Race:** An exhilarating event that showcases the spirit of innovation and competition among our students.



...GLOBAL LEADERSHIP ACADEMY

- **The Green Room and regular Impact classes:** Our Emotional Care team's dedicated efforts to connect with and support our learners as they navigate the complexities of adolescence.
- **Free Market Fridays:** An innovative concept that has inspired some students to take up the challenge of generating a R50 000.00 profit before their high school journey concludes.
- **Student-Led Initiatives:** Ranging from sports like soccer and mountain biking to creative ventures such as Kingdom Labs, a Hip-Hop Dance Academy, these initiatives empower our students to lead and excel in their chosen fields.
- **The annual Cum Laude Tour** is a special occasion where we extend an invitation to our top academic achievers. They are given the opportunity to come together and embark on a well-deserved travel break that is exclusively tailored for them as a reward for their unwavering dedication and hard work.
- Additionally, our **Grade 12 Tourism** tour remains ever-popular, and this year, it again provided our students the opportunity to go on a luxurious boat cruise, a notable highlight for those learners pursuing Tourism in Grade 12.

And last but certainly not least:

- **TravelSCHOOL:** which I believe to be the premier leadership development opportunity available to learners from GLA. During the 2023 TravelSCHOOL a group of 22 learners visited Kenya, Tanzania and Zanzibar while getting the opportunity to serve a rural tribe in Kenya through a partnership with the organisation Walking with Maasai.



Student and Parental Survey Summary

At the end of 2023, we conducted a school-wide survey to evaluate our impact across three key areas: Delivering Quality Education, Making Disciples, and Shaping Leaders. The results were highly encouraging, as both parents and students demonstrated significant similarities in their observations of our impact.

Furthermore, the findings reaffirmed that learners within Global Leadership Academy are not only provided with opportunities to encounter Jesus but are also actively encouraged to grow and mature spiritually."



...GLOBAL LEADERSHIP ACADEMY

Student and Parental Survey Summary

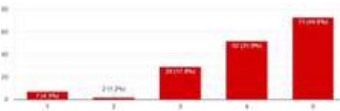
At the end of 2023, we conducted a school-wide survey to evaluate our impact across three key areas: Delivering Quality Education, Making Disciples, and Shaping Leaders. The results were highly encouraging, as both parents and students demonstrated significant similarities in their observations of our impact.

Furthermore, the findings reaffirmed that learners within Global Leadership Academy are not only provided with opportunities to encounter Jesus but are also actively encouraged to grow and mature spiritually."

Quality Education

PARENTS

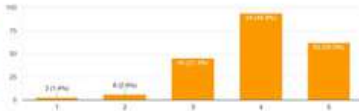
My child has taken more responsibility for his school work.



76.7% PARENTS AFFIRM
5.5% Disagree

STUDENTS

I have taken more responsibility for school work.

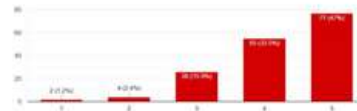


74.3% STUDENTS AFFIRM
4.3% Disagree

Quality Education

PARENTS

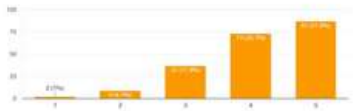
My child is equipped to work more independently.



80.5% PARENTS AFFIRM
3.6% Disagree

STUDENTS

I am equipped to work more independently.

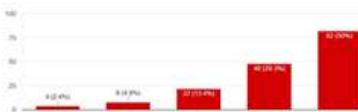


76.9% STUDENTS AFFIRM
5.3% Disagree

Making Disciples

PARENTS

My child knows that the Lord created him for a purpose.



79.3% PARENTS AFFIRM
7.3% Disagree

STUDENTS

I know the Lord has created me for a purpose.

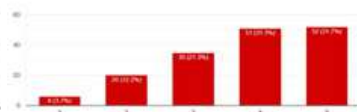


76.1% STUDENTS AFFIRM
10% Disagree

Making Disciples

PARENTS

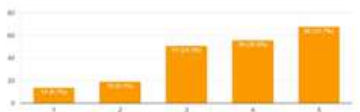
My child has grown in relationship with Jesus.



62.8% PARENTS AFFIRM
15.9% Disagree

STUDENTS

I have grown in my relationship with Jesus.

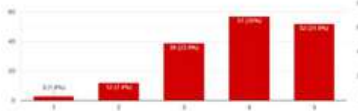


59.6% STUDENTS AFFIRM
15.8% Disagree

Shaping Leaders

PARENTS

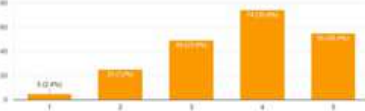
My child's awareness of his areas of growth has improved.



66.9% PARENTS AFFIRM
9.2% Disagree

STUDENTS

My awareness of my own areas of growth has improved.



62.0% STUDENTS AFFIRM
14.4% Disagree

Shaping Leaders

PARENTS

My child better understands the importance of serving others.



67.1% PARENTS AFFIRM
12.2% Disagree

STUDENTS

I better understand the importance of serving others.



62.7% STUDENTS AFFIRM
12.4% Disagree



OAKRIDGE ACADEMY

DIRECTING TEAM



Lynette Schulz



Estee Kleyn



Charne Vorster



 CULTIVATE ADVENTUROUS, BRIGHT MINDS

 LOVE LIFE

 NURTURE AND DISCIPLINE YOUNG HEARTS

 CROSS BORDERS

2023 started off with excitement as our Grade R - Grade 3 students were able to move into their brand new classrooms - praise Jesus! Not only did we have brand new classrooms, but four brand new staff members who became part of the Oakridge team, partnering with us in laying firm foundations in the lives of our young students.

2023 HIGHLIGHTS

- The Grade 7 Team Building Day, where the tone was set for our 2023 leaders of the school.
- Grade 4 Museum outing, which not only introduced these learners to the new subject of History, but also gave them inspiration for their very own museum exhibition at school.
- Oakridge Family Fun Athletics Day, where young and old had fun on the field.
- Parents' Workshops that both equipped and inspired parents on their journey of parenthood.
- The first interschool sports day in Port Elizabeth where we participated in soccer and netball, and won a lot of our games.
- An unforgettable Grade 4 - 7 camp where children encountered Jesus in such a special way.
- Our staff completing a 6-week course in basic, conversational Xhosa lessons.
- Hosting a successful Soccer Tournament and walking away with the senior trophy.



...OAKRIDGE ACADEMY

- Celebrating our cultural diversity was definitely also a highlight as our dads jumped in and manned the braai to make sure the South African heritage is carried over.
- The annual Grade 7 outing, "Journey with Jesus", where they learn to practically walk with Jesus moment by moment. Here, they also had the tremendous privilege to feed elephants and watch whales play in the water right next to the boat for the very first time.
- Last, but not least, 2023 marked a milestone for us as we celebrated the 10th birthday of Oakridge Academy at our year-end Celebration.



Ongoing support for learners and parents

Throughout the year, we were able to continue supporting families at various times who were in need of basic food through donations and teachers giving selflessly. We also appointed someone who specifically visited parents at home that needed guidance and support, which meant that parents themselves could receive encouragement and counselling as needed.

A small group of parents were actively involved in praying for the teachers, learners, and their families. This initiative formed the backbone of the school, and we are so grateful to those partnering with us through prayer.

Our learners had the privilege of having a counsellor available at school twice a week who not only listened patiently, but also guided them through difficult situations they experienced both at school and home.

We were able to assist learners in receiving specialized assessments and therapy from Educational Psychologists and Occupational Therapists by specifically putting funds aside for this. This holistic approach to education is essential in order to enable children to develop in all areas of life.



...OAKRIDGE ACADEMY

Extra-curricular Activities

The foundation phase learners were exposed to a variety of activities. Weekly music lessons, athletics, soccer, gymnastics, basic water safety and dance lessons. The Grade 4 - 7 learners also had the opportunity to grow in different areas of athletics, soccer, netball, tennis, dance and drama. We are so proud of their good sportsmanship and how well they are doing in matches played against other schools!



Outreaches

As you know, we have the privilege of teaching our children to love our neighbours as we love ourselves. Part of this means reaching out to people outside of ourselves, our families and class. Each term, as part of our curriculum, all of our learners get a practical opportunity to do this, as part of our core values are "crossing borders" and "loving our neighbours".

This helps us teach our learners how to love, pray, encourage and care for others. We also help in a practical way by making / buying / gathering some resources the people we visit would need or by putting a small gift and card together to encourage those we visit.

Some of the places and people we have been to encourage in 2023 are Tharros Family Centre in Hankey, TIMION, Joshua Project, Jeffrey's Bay Police Department, Old Age Homes, 7th Heaven Children's Haven, The Healthy Mom and Baby Clinic and many more.

What a blessing it is to be able to bless those around us and to teach our children to care, pray and make a difference in the lives of those around them.



Closing Words

As we look back over this year it is with deep gratitude, not only for 2023, but also for God's faithfulness throughout the past 10 years - what a faithful God we serve!



TREE TOPS LEARN AND PLAY PRE-SCHOOL

DIRECTING TEAM



Ronelle Vermuelen



Anna-Marie Franken



Fred Euvrard



Anita Labuschagne



Tree Tops is a preschool where we ensure premium development through the classroom and through play. We value individual attention!

2023 was a year of new things. We moved to our new premises on the Global Campus, which allowed us to integrate more with everything happening at school, with the staff and children.

Many things needed to be taken care of logistically, which would not have been possible without the help of some gracious volunteers. Uncle Ian from Scotland erected the fencing around the house, the missions students helped put up the jungle gym, and a group of German volunteers helped build the new sandpit. We tried to include our kids in all the activities, teaching them to help and take ownership.



The one new thing that was started in 2023 that made us really excited is the first **Tiny Trail Run**. We see trails runs as a great way to get kids out in nature and exercise. It also present the opportunity to create an event that will serve as a fundraiser for Tree Tops.

The first race saw over 270 entries across the distances. The jumping castle was a hit with the kids and the the food/drink stalls with the parent. It was very encouraging since the day was completely organised and run by Tree Tops learner parents.



WHAT MAKES THIS SCHOOL SPECIAL?

Tree Tops has small classes, ensuring individual attention. We use creative learning and a lot of play!

Our hearts' desire is to shape little ones with the knowledge of Jesus Christ. We do this by establishing a firm foundation in their lives at a young age, and by raising them up in a loving, creative environment. We play, dance, laugh, sing, bake and use alternative methods to teach academics and skills.



A CALL TO TEACH

Psalm 145:4

One generation shall praise your works to another, and shall declare your mighty acts.



In January 2023 our first-year intake was 3 students, one of whom was unable to continue after the first month. Of last years students, 2 moved on to different opportunities leaving 1 second year student and 2 third-year students. Putting the total number of students for 2023 on 5.

The first years joined the Mission training program for January and February and then continued with ABC Adventure training with Evelyn. The second years did Veritas 2 and the third years Veritas 3 with Mrs McFarlane.

The group travelled to Mozambique, on an outreach, with the MTAT students from King School West Rand. This took place during the June holidays. Wellington was a great asset as he was able to help the MTAT team with driving their bus. During the outreach, ONE of our student heard of her mother's passing and was flown back to Jeffreys Bay.

During the third term the students connected with Ithemba and started working on a program to support their afterschool kids.

The ACTT students were also involved at Oakridge, Tree Tops, Makukhanye, Pellsrus and GLA.

After ABC and Veritas graduation, Gawie and Tersia joined the team and started with the Life plan program. Their connection and mentorship is a great value to the students and the program!



ABC ADVENTURE

ABC Adventure is an initiative that equips facilitators to help children who have fallen behind with basic math and reading skills.

During 2023 we ran 4 ABC Adventure Schools. One of the courses ran in Jeffreys Bay with 1st year students of the A Call To Teach program and the other 3 courses all ran in Port Alfred.

We also continued with the Sophakama Tutor Training program, running courses in Jeffreys Bay, Mossel Bay, Paarl and George and training a total of 21 students.

Testimonies from this year include a Sophakama student implementing a new youth ministry program at 7th Heaven Children's Haven and an ABC student using what he learned to share at the Aftercare he works at. Other students have said that since attending the trainings they feel more equipped for their work with young people and have greater clarity with regards to child development.



GET DEGREE



The escalating cost of tertiary education propelled us, as champions of further studies, to explore new opportunities to increase the accessibility of tertiary education in South Africa. The only way to do this is by lowering fees and ensuring students can study from home. This effectively negates the additional expenses of accommodation and travel.

We found a like-minded partner in the International University of Applied Sciences in Germany (IU), and Global Challenge Education is now able to offer accessible tertiary education to any person residing within Southern Africa. This will surely also develop into a fund-generating initiative which will, in return, support our other ventures.

2023 started with some struggles as our partner IU changed systems and then downgraded our subsidy of fees from an 80% to 65% subsidy. Regardless of the challenges we managed to have a strong end to the year with renewed focus and 7 new students signing up. We also have 3 of the students that signed up in 2023 doing Travel Varsity in 2024.





GLOBAL CHALLENGE MISSIONS

Missions Team
One Year Expedition
Short Term Expeditions
Travel Varsity
Way to The Nations
Missions Camps
Long Term Field Workers



GLOBAL CHALLENGE MISSIONS



MISSIONS TEAM



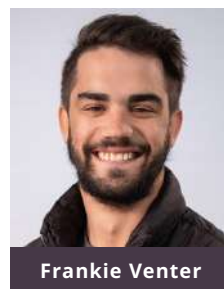
Willem Taute



Simon Dilger



Linel le Roux



Frankie Venter

The year of 2023 was a fruitful year for Missions. We could finally throw off the shackles of COVID and start flexing our international mission muscles again.

We were overjoyed with the positive feedback we received from around the country. And the verdict was in when the applications started rolling in towards the end of 2022. Yes! Young people were ready to travel with Jesus again.

This was also the year we launched two brand-new journeys. The first was Travel Varsity – the innovative way of studying online WHILE travelling and ministering. The second was our preparation training for those wanting to live in another nation for a medium to long-term period. This was aptly christened Way to the Nations.

ONE YEAR EXPEDITION

What a joy it was to see a team of 17 passionate people take off on their journey around the world. It was also the first time in several years that a married couple led our team. Frankie and Mari did exceptionally well. Students were discipled during the program and came back with a vision for cross-cultural missions.

The team completed their 6-week training at the start of the year. We changed our Survivor model for training. Instead of surviving in one camp in the bush, the team hiked along the coastline for a distance of nearly 80km. From Huisclip to Jeffreys Bay. They had almost no gear and had to survive with food caught from the ocean or the veld. We also hosted two challenges along the way to allow them to compete for a few extra potatoes and fruit.

Our decision to change our model for Survivor was vindicated when we saw the results. Through the experience, the team was cast in unity. After that, very little could separate them.



ONE YEAR EXPEDITION...

The countries of ministry for the team were South Africa, Mozambique, Eswatini, Israel, Jordan, Armenia, Georgia, Turkey, Thailand, Vietnam, Laos, Malaysia and India.

Highlights were ministering and raising funds for a School for the Deaf in Laos. And hiking across the snow-capped peaks of northern India. Here they visited people in remote villages and stayed with them in their homes. They had several testimonies of life-changing conversations with people in the mountains, sharing the gospel and reading the Bible together!



SHORT-TERM EXPEDITIONS

There were four outreaches or trips over the year:

Passover in Portugal in April, Maldives Pray and Play in July, a Heart for Asia (South Korea and Japan) in December and Inspire India, also in December.

It was the first time we sent a team to South Korea and the first time a short-term team visited the Maldives. We are hoping to grow the Maldives into a yearly trip.

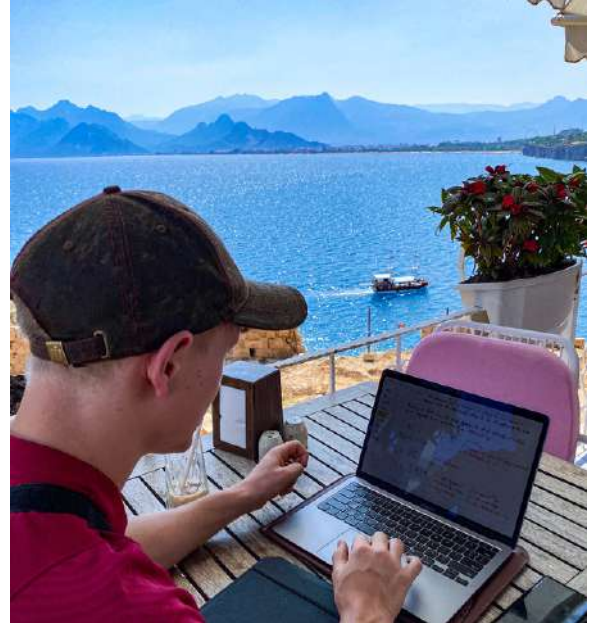


TRAVEL VARSITY

The year of our first Travel Varsity team. Since there were only two members, we merged their travel itinerary with the One-Year team.

Their experiences taught us a lot and in retrospect, it was better that there were only two students. One of the most valuable lessons was that the intensity of travel and ministry had to be toned down considerably, to allow for adequate study time. We also learned that Travel Varsity needs to form a team on its own and not join with other teams for prolonged periods.

But, they made it! They set the foundations for future teams and we are looking forward to learning from the Travel Varsity team of 2023.



WAY TO THE NATIONS

For our inaugural 6-month WTTN training we had two students who joined, Their training was completed successfully.

One went on the serve as a volunteer and is currently helping us to host the AIM teams that are visiting Global Challenge in Jeffreys Bay nearly every month.

One left for South East Asia. She is using her qualifications to serving as an therapist at a hospital. It's a joy to see both of them serving the Lord faithfully.



MISSIONS CAMPS

Local is Lekker was the theme of our 2023 Missions camp. And it was a joyful, yet challenging occasion.

We wrestled with our planning for the camp, nothing seemed to flow, and we couldn't find the right venue. Then it dropped, why not do it in Jeffreys Bay?

One of our main discussion points throughout the weekend was centred around the theme of dualistic thinking. We addressed the damaging mindset that some vocations were more holy than others. That some jobs 'counted' for the Lord and others didn't.

Our motivation was to be an encouragement to teachers, businessmen and others. We wanted to affirm them in their callings and we helped them to redefine their local mission field. In our Global Challenge context, people who travel or live in other countries can easily be looked to as doing the 'real' jobs. And that the rest are settling for second best. We wanted to challenge that thinking while still keeping cross-cultural missions in the crosshairs.

The weekend was interspersed with sessions, discussions, storytelling, interviews, a sleepover in the school building, meals together, a prayer walk, through-the-night prayer and a local house-building expedition. We will never forget the sight of our children mixing cement and pushing a wheelbarrow in the pouring rain!

To close off the weekend, instead of organising our Celebration for Sunday morning, we went and visited other local churches in our region.

LONG TERM WORKERS

Except for one family, all of our workers are still in the field!

Representing His Kingdom is a team of 3 in the Middle East, in South Asia we have 6 workers in 4 different locations, in Panama there is Elsabe, in Kenya; Andre and Corneli and in Switzerland; Tobi and Carmen.

One of Elsabe's ways of reaching out to the locals in Panama is by playing Ultimate Frisbee. After excelling at club level she had the honour of being selected to represent Panama at next years Ultimate Frisbee World Cup.

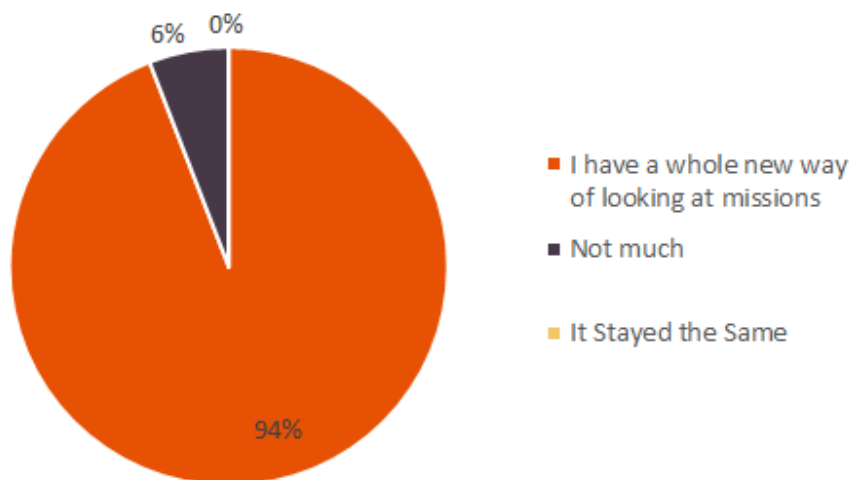
This year we sent out Nyasa Groenewald to Bristol, England. She is a speech therapist and working at centre for children with speech disabilities. She fully embraced the vision that we do don't have to be dualistic in our thinking. We can worship God through our work and use the opportunities that creates.

The family mentioned, who are coming back to JBay, tried to move to New Caledonia, an island nation off the coast of Australia. Unfortunately, after multiple failed attempts they were unable to secure visas for the country and are currently in a waiting phase.

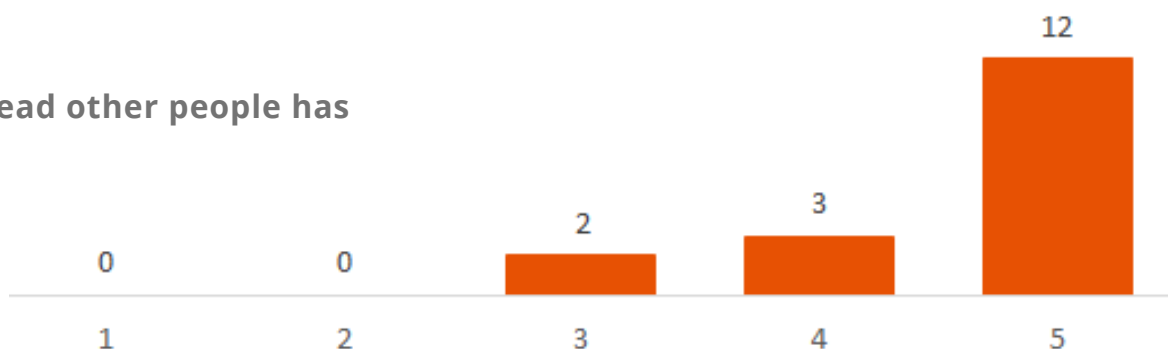


MISSIONS SURVEY DATA

How much has your perception of missions changed over the year?



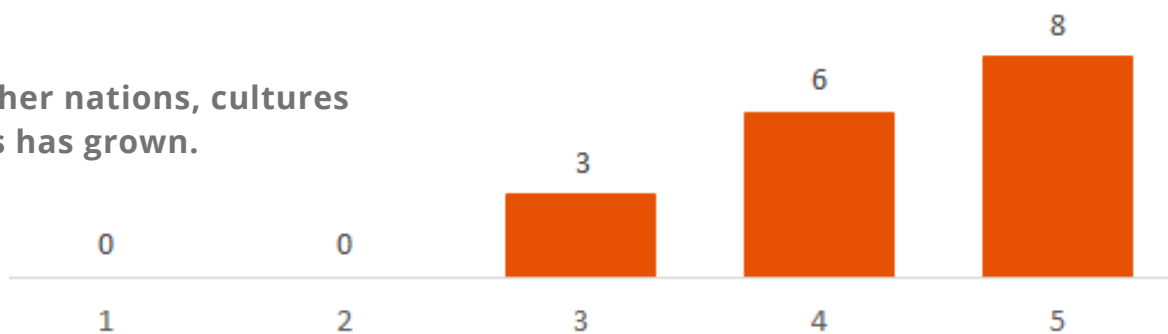
My ability to lead other people has grown



I want to be missional in my lifestyle, wherever I go next.



My love for other nations, cultures and languages has grown.





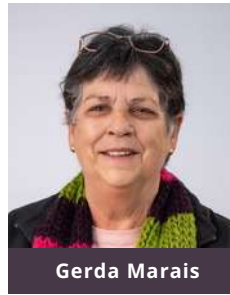
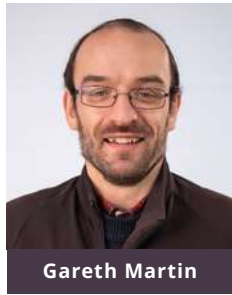
GLOBAL CHALLENGE OPERATIONS

Global Challenge Operations
Global Challenge Campus
Global Village
This Land



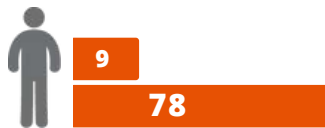
GLOBAL CHALLENGE OPERATIONS

OPERATIONS TEAM



GENERAL OVERVIEW:

Over the past 13 years Global Challenge in Jeffreys Bay has grown from:



FULL TIME STAFF MEMBERS



PER MONTH PAY-OUTS IN SALARIES



WORTH OF BUILDINGS

STRATEGY AND SYSTEMS

In 2023, the focus was on improving our modes of communication. We worked on internal and external communication processes and put some frameworks in place to improve our visibility.

In 2023 we have:

- Implemented WhatsApp Communities, providing a structure for our groups and eliminating the need for duplication of informational posts on various platforms.
- Posted monthly updates providing information on upcoming events on our Global Calendar.
- Tried to improve our social media presence with more regular updates.
- Created a Global Vision Booklet for orientation and seamless integration of new members into our community.

As a registered NGO, we qualify for various opportunities. We have implemented the following systems and are using:

- *G-Suite*
- *Salesforce*
- *QuestionPro*
- *Sage Accounting and Payroll*



We are in the process of:

- Improving www.globalchallenge.org and linking it to our social media.
- Establishing and expanding *Salesforce* as the operational management system for donors.
- Regular communication with our "crowd" via multiple platforms around the developments of Global Challenge.



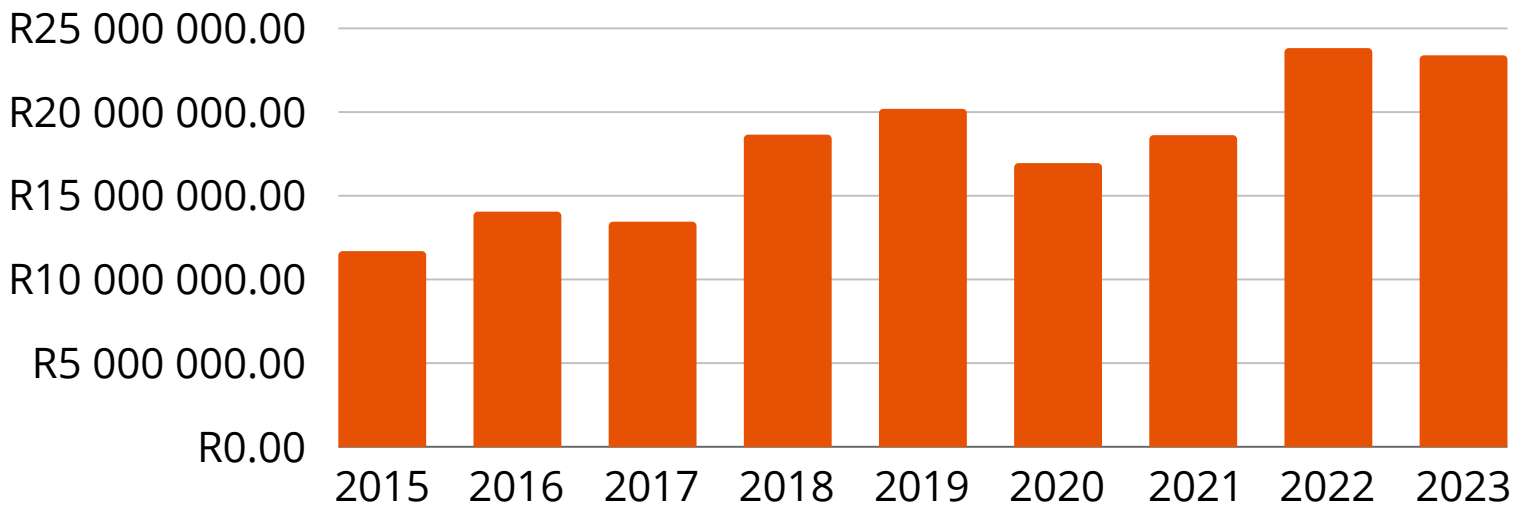
...GLOBAL CHALLENGE OPERATIONS

REPORTS FOR THE YEAR 2023

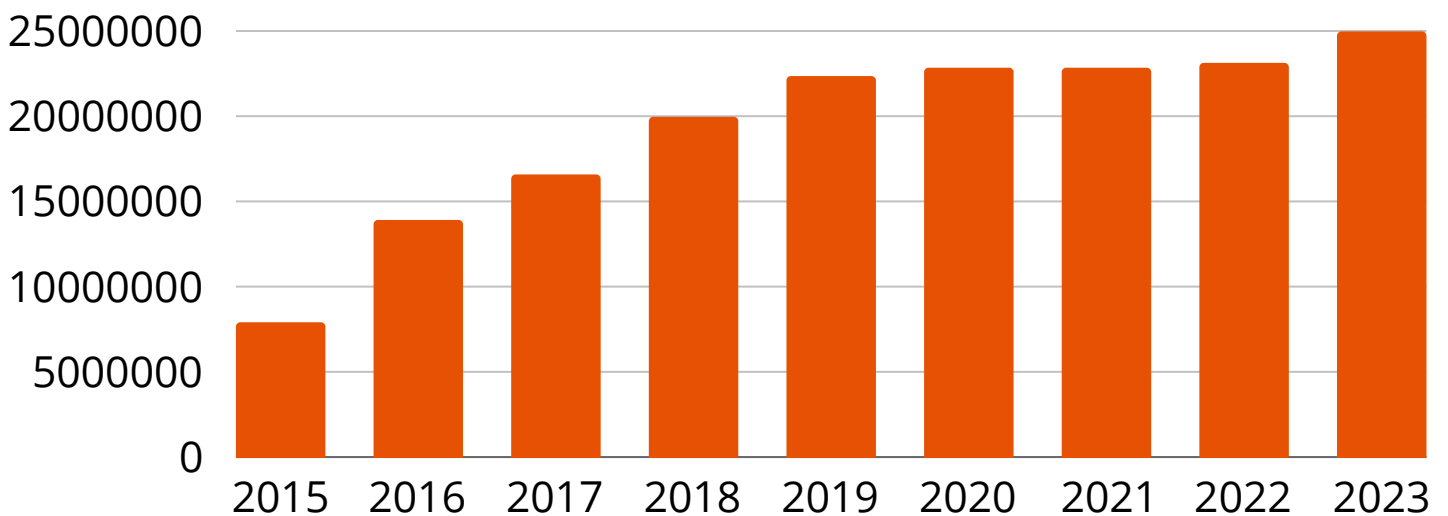
MAIN SOURCES OF INCOME



YEAR ON YEAR INCOME



PROPERTY LAND AND EQUIPMENT



GLOBAL CHALLENGE CAMPUS

DEVELOPMENT DIRECTING TEAM



Clara du Plessis



Stefan Kleyn



Anna-Marie Franken



Jacobus Scott

Over the past few years, the development of the Global Challenge Campus captivated the hearts of all who witnessed God's provision. We think back to the very first prayer walk in 2010 when Johann McFarlane prayed these wise words (while walking through a sea of yellow flowers that covered the untouched land):

"Lord, if ever this land is developed, it will only be you. Because we know, and you know, that we have nothing. It is only you who can provide for and direct this project."

Today, every building, every walkway, every home, and every classroom testifies to God's provision and providence. The Global Challenge campus has become a platform from where numerous of our initiatives are launched. Better still, it is also the place where many of us return to as we wait on the Lord to direct our next steps to the nations.



...GLOBAL CHALLENGE CAMPUS

MULTI-FUNCTION CAMPUS

Currently the Multi-Function Campus host a variety of Kingdom Impact Initiatives

- Global Leadership Academy, Grade 8-12
- Oakridge Academy, Grade R-7
- Tree Tops Playschool ages 2-5
- Mission House, hosts regular mission teams travelling through Jeffreys Bay
- Our own Sunday morning Celebration service is held on campus
- Global Challenge Head Office
- Communal Living

The year of 2022 saw us starting to build the first 4 classroom for Oakridge that will open up much needed space for accomodation and to move our Pre-Primary school Tree Tops onto Campus in 2023. During the year we saw the garden project turn into a fully fledged project called This Land and the Village development breaking ground with the civil serives being installed.

OTHER PLANNED DEVELOPMENTS

- Oakridge Academy Development; 8 classrooms, hall and office block
- Multi-sport community Astro Turf
- Phase 3 of GLA buildings including additional classrooms, an auditorium, cafeteria, technical school and additional communal housing.



GLOBAL VILLAGE

The Global village initiative was born from the need to house returning missionaries, teachers at the schools, young families, retired volunteers, and many others... a community of interracial, intergenerational mission-minded people, living together.

We praise the Lord, in 2023

... the foundations of 19 houses were laid!

... 10 houses are already occupied.

... 9 others are near completion.



There was a massive hurdle in that after the foundation for the first few houses was laid the NHBC stopped construction on all but 3 houses. It took 9 months of multiple trips, lots of question, legal advise and prayer before the green light was given to continue building.

Glimpses of the reason the Lord prompted us to build the Village are seen in...

... the first Village braai

... working Wednesdays of helping each other

... faith journeys taken

... community living being practiced



HIS TABLE



The Lord gave us the name for “this land” in the first week of January 2024: *His Table*

2023 was a year of successes, challenges, growth and dedicated hard work, striving to be inclusive, gain trust and be sustainable. To ensure that we accelerated our progress in developing the land, we started with planning based on relevant research to establish the ecosystem for the land, and to set the foundation for His Table’s full potential to be reached. All this with optimal usage and application of resources at our disposal, ensuring we are water-positive, carbon-negative and generate zero waste.

FOOD FOREST

In the process of establishing the food forest, the following monumental milestones were reached:

- In May 2023 the first mapping was done to determine the layout of the different areas in the garden. This was necessary to determine access roads, windbreaks and water resources.
- A small greenhouse project was initiated on 3 June 2023. We used the current garden area near the school to secure a netting area to start trials for different flower seeds and vegetables.
- We constructed a germination room to germinate seeds and produce our own seedlings. These will supply plants in and around the garden, allow for seed trials, and produce enough seedlings for the trees creating the indigenous forest.
- We started a worm farm on a small scale below our seed tray tables.



...HIS TABLE

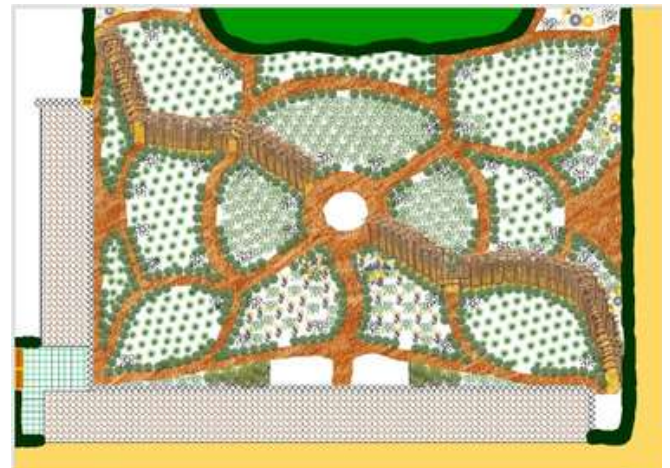
- On 3 June we purchased a large amount of indigenous trees from a local nursery that needed to shut down. Larger trees provided our windbreak at less than cost price. We used the opportunity to resell some of these trees to the Global Community, thus ensuring larger trees would be established in the ecosystem in and around campus.
- We completed our tool shed by 8 June, which provided us with a working space during the cold winter season. All our tools could be kept safe, locked up and weather-protected. This presented the opportunity to teach our volunteers and staff good stewardship.
- We have taken up the challenge to regularly supply our local and wider community with fresh vegetables and flowers. This helps generate funds so the garden can be sustainable and we can pay weekly wages.
- We planted our 250-metre-long windbreak of Cape ash and Kei apple trees around the food forest on 13 June, followed by 30 olive trees and 40 fig trees which we had propagated in 2022.



RESEARCH AND DEVELOPMENT

We need to plan everything in the finest detail and not take any risks. We are taking our time to plan and design our “skeleton” in order to simplify systems and prevent anxiety.

Taking into account climate with all its variables, geography, shapes of land and soil conditions together with Scriptural guidelines as provided in Exodus 23:10-11, we have come up with the design for our vegetable garden (image on right).



Existing Gardens

- We received a donation from The Butterfly foundation in November 2023 for the year ahead. This provided funding/salaries for our two fulltime gardeners for a whole year. It was a breakthrough for our team who has worked very hard over the past two years to establish our vision with faith and seed. Jesus is so faithful.
- In the same month, Julie Flemming was appointed to help with planning and research for the food forest. She will be working with us this year and we hope, for many more.



...HIS TABLE

Planning and Mapping

- Global Community member and architect, Zirk Kay eagerly volunteered his time and skills to draft a layout for the garden and “His Table”.
- We built our second dam (image below), a 6x9-metre pond in December 2023. It receives water from the main dam’s overflow. The pond is a garden feature and water source for the surrounding food forest.
- This pond was donated by a farmer in the Free State who was moved by the vision for the garden. We planted three large Outeniqua Yellow wood trees in honour of the donor.



EVENTS

Every last Tuesday of the month, we host our “He sets a table” worship evening. The Lord put it on our hearts to provide a space for us as His body to practise waiting on Him, linger in His presence and respond to Him in a very authentic way. This event has become a highlight where many people are encouraged. We set an elaborate table full of food and beautiful things to help people receive God’s presence and heart for them on campus.

CONCLUSION

It’s impossible to list every single blessing we have received over the course of 2023. It was a year of establishment and setting foundations, showered with God’s grace while the land was ploughed thanks to hard work by a dedicated team’s perseverance. Many doors were unlocked.

What a privilege to be part of a team of leaders all championing one vision. That vision remains central:

J E S U S

Thank you for having faith in me. I appreciate all your input and feedback.





PARTNERS

Marketplace and Business



MARKETPLACE AND BUSINESS

"We contribute to the economic growth and development of our community through championing the building of healthy Kingdom-businesses."

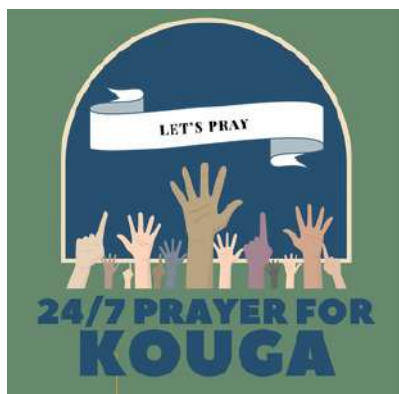
The purpose of doing business ranges from simply doing business based on Kingdom principles to intentionally using businesses to create a spiritual and social impact. The level of involvement from Global Challenge ranges from practical and financial support to rallying the Global Challenge Community around them. We love to see them grow and be established as natural expressions of a healthy community venturing out with their God-given potential.

Profitable Kingdom businesses will either pour back into other Kingdom initiatives or establish platforms for individuals to create sources of income. Alternatively, they could provide purpose and income for people who want to pioneer Kingdom initiatives in other countries.

In 2023, we saw our members in their business spheres grow in sustainability and finances.

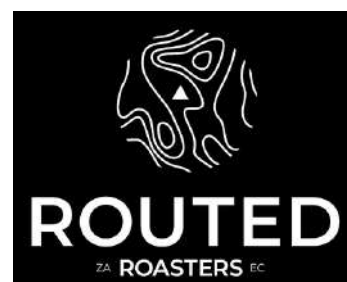
First Light's team and prayer room became central to the *24/7 Prayer for Kouga*. This initiative hosts 24/7 prayer weeks seven times throughout the year. This has contributed to rapid growth in various church denominations that gather together for one-hour prayer slots. They also join in hosting or participating in daily prayer walks throughout Kouga where it is most needed.

This year has seen remarkable growth in the marketplace. Hattingh Bornman, former teacher at GLA, became Mayor of Kouga! Later in the year Reinhardt Foley, former member and head of the Global Missions team, was voted onto the Mayoral committee. Both of them still play a pivotal role in the Global Community and Church. This has led to a change in the way we support and pray for our local government.



KINGDOM BUSINESSES STARTED BY GLOBAL CHALLENGERS:

- Travel is Lekker (Travel Agency)
- Global Junction (Coffee Shop)
- NPO Solutions (Website Design)
- Pure Design Architects
- First Light Coffee Bar
- Routed Roasters (Coffee Roastery)
- Moments of Grace (Book Shop)





GLOBAL CHALLENGE
MAKING DISCIPLES · SHAPING LEADERS

ANNUAL REPORT 2023

**ADDRESS : GLOBAL LEADERSHIP CAMPUS
OUTENIQUA ROAD,
FOUNTAINS ESTATE
JEFFREYS BAY
SOUTH AFRICA**

**TEL : 042 293 1511
EMAIL : INFO@GLOBALCHALLENGE.ORG
WEBSITE: GLOBALCHALLENGE.ORG**